

Anaesthesia Mask Adaptor

Gen.1 User Guide

v1.1



All play involves risk – make sure you understand and think about and communicate what is acceptable to both you and your play partner. Practice RACK (Risk Aware Consensual Kink) and always play well within you and your play partners limits.

Never play with this device on your own.

Remember: Safe, Sane, Consensual

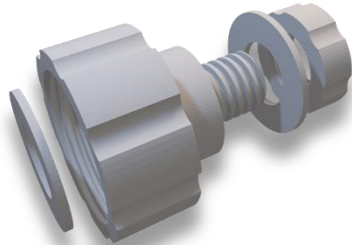
About your Adaptor

This adaptor attaches to most standard Anaesthesia masks with a forward facing 22F connector and provides you with a 40mm NATO/GOST compatible connection. This will allow you to attach accessories – for example a Slick Aroma Pump Gen.2 or a standard gas mask hose.

What's in the box?

In the box you'll find:

- 1x Mask Adaptor 22F-40MM
- 1x Securing Nut
- 2x Seal Rings



Attaching your Adaptor

The Adaptor attaches to your mask by pushing the threaded stem through the 22F inlet, then securing it in place with a Seal Ring and the Securing Nut on the inside of your mask.

Using a Seal Ring between the Securing Nut and your mask helps to keep things as airtight as possible.

When tightened up, the adaptor should be securely attached to the front of your mask, with no 'wobble' in any direction.

It will still be possible to rotate the adaptor around – this is because the seal rings are made a low-friction material, allowing you to reorient things after assembly.

Removing the adaptor is as simple as loosening the Securing Nut.

Attaching accessories

A second sealing ring is included in your kit – use this inside the 40mm connector at the front of your mask to ensure a good, secure seal with any accessory you attach.

Simply screw the accessory into the thread on the front of the adaptor paying special attention to where the thread starts on both the adaptor and your accessory.

Because the thread is cross-compatible with both NATO and GOST, you may find you need to wiggle accessories slightly to get the thread to engage. Don't force it!

Whilst the thread on the front of the adaptor is designed to be broadly compatible with any accessories with a 40mm NATO or GOST thread, it is possible your specific accessory won't fit.

If you are having trouble with your particular attachment, get in touch and we'll happily see if we can design you something with a slightly different thread!

A word about Aroma

Your Adaptor is constructed from PLA Bioplastic. If using this Adaptor with an aroma pump you should try to minimise the duration the plastic is exposed to aroma, as discolouration inside the Adaptor may occur with prolonged exposure. It'll be just fine for a play session, but don't leave it exposed to aroma, say, overnight. Discolouration is more visible on lighter colours such as white, lime, gold and yellow.

Questions, Comments or Feedback?

We're always happy to help – drop us a line via DM on Twitter **@slicklatex** or via email at info@slick-latex.co.uk